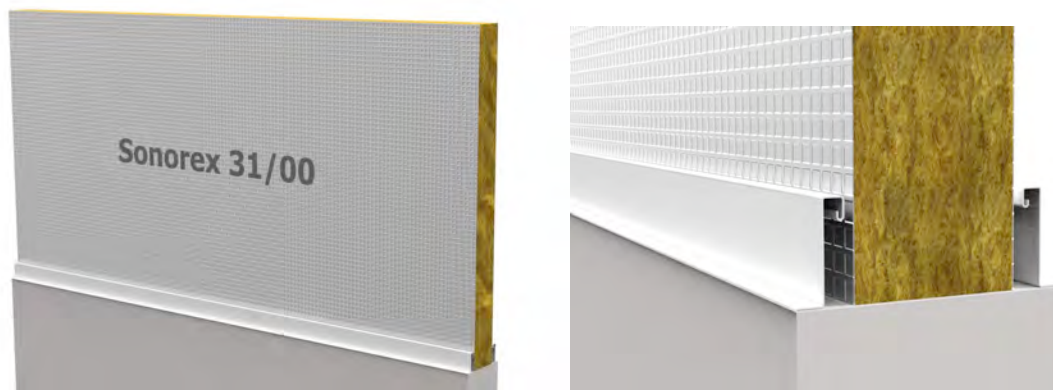


Sonorex® 31/00

Easy Mass Noise Barriers

General

The Sonorex® 31/00 barrier is specially developed for use above light partition walls and lowered ceilings in order to improve soundinsulation and fire resistance. This development was driven by a growing demand for flexibility of furnishing in combination with stringent requirements in the utility and healthcare sectors.



The unique composition of the Sonorex® 31/00 barrier renders the use of one or more plaster strips in the Bandraster grid unnecessary, provided that the adjoining ceiling is specified as fire class C or better and is locally resistant to higher temperatures. The Sonorex® 31/00 barrier is usable in combination with the wall up to a total height of no less than 4000 mm!

Technical data

| Size | | |
|------------------|--|------------------------------------|
| Barrier height | | max. 2000 mm* |
| Length | | 1200 mm |
| Thickness | | 60 mm |
| Sound Insulation | | 31 dB* Based on ISO717-1:1996 |

Usage

Refer to the Sonorex® assembly advice for information on how to fit the Sonorex® 31/00 barrier. Contact us if you have specific questions about the usage of the Sonorex® 31/00 barrier.

(*) Sonorex® products have been tested in accordance with the standards stated in this datasheet. We recommend that you contact us if you have questions about usability, dimensions and connections.

LABORATORIUM VOOR AKOESTIEK

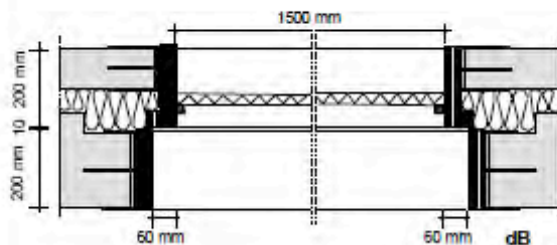


LUCHTGELUIDISOLATIE VAN EEN SCHEIDINGSCONSTRUCTIE CONFORM ISO 140-3:1995



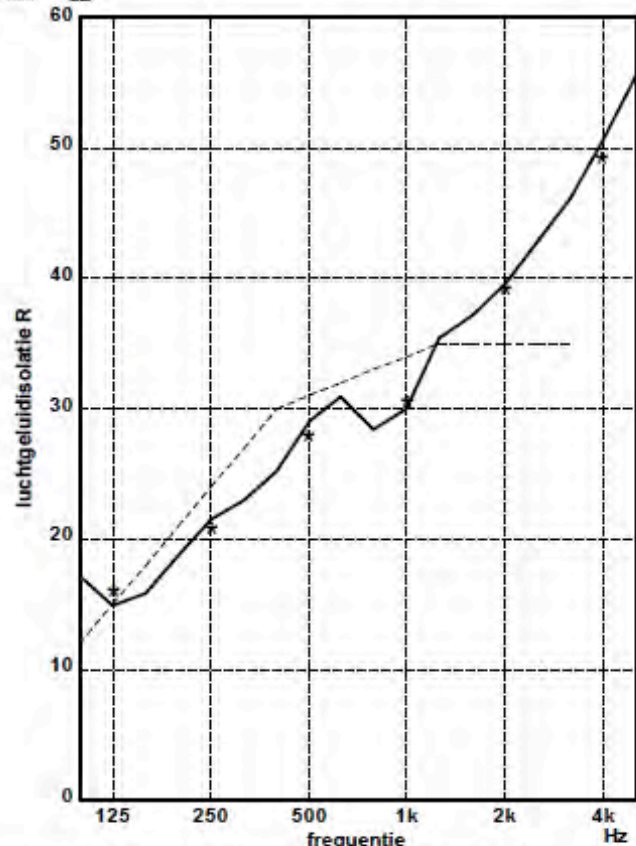
opdrachtgever: Isolpro BV

fabrikaat: Saint-Gobain Isolpro
 type: Sonorex® 31 dB
 dikte: 60 mm
 oppervlakte massa: 8,7 kg/m² (gewogen)
 kernmateriaal: steenwol, dik 2 x 30 mm (135 kg/m³ nominaal)
 afwerking aan zichtzijden: glasvezel versterkt aluminium 20 mu



volume zendvertrek: 214 m³
 volume ontvangvertrek: 115 m³
 oppervlakte proefwand: 1,8 m²
 gemeten in: laboratorium
 signaal: breedband ruis
 bandbreedte: 1/3 octaaf

ISO 717-1:1996
 $R_w(C;C_{tr}) = 31(-1;-5) \text{ dB}$



| | 125 | 250 | 500 | 1k | 2k | 4k |
|----------------------------|------|------|------|------|------|---------|
| — 1/3 oct. | 17,2 | 18,8 | 25,3 | 28,4 | 37,1 | 46,1 |
| * 1/1 oct. | 14,9 | 21,5 | 29,1 | 30,0 | 39,5 | 50,6 dB |
| | 15,8 | 23,0 | 30,9 | 35,4 | 42,8 | 55,5 |
| ----- ref. curve (ISO 717) | 15,9 | 20,7 | 27,8 | 30,4 | 39,2 | 49,2 dB |

publicatie is slechts toegestaan in de vorm van dit gehele blad

Mook, 23-08-2005

Insulat rel. 2.1.4, mode 2, bestandsnaam: a1491_Skr_260_261_###262

A 1491-3-RA

figuur 4