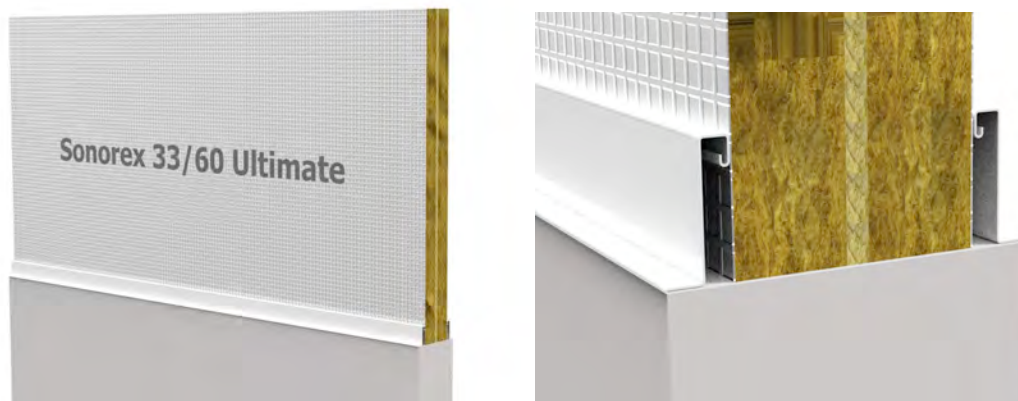


# Sonorex® 33/60 Ultimate

## Easy Mass Fire and Noise Barriers

### General

The Sonorex® 33/60 Ultimate barrier is specially developed for use above light partition walls and lowered ceilings in order to improve soundinsulation and fire resistance. This development was driven by a growing demand for flexibility of furnishing in combination with stringent requirements in the utility and healthcare sectors.



The unique composition of the Sonorex® 33/60 Ultimate barrier renders the use of one or more plaster strips in the Bandraster grid unnecessary, provided that the adjoining ceiling is specified as fire class C or better and is locally resistant to higher temperatures. The Sonorex® 33/60 Ultimate barrier is usable in combination with the wall up to a total height of no less than 4000 mm!

### Technical data

<b>Size</b>		
Barrier height	max. 2000 mm*	
Length	1200 mm	
Thickness	66mm	
<b>Sound Insulation</b>	33 dB*	Based on ISO717-1:2013
<b>Fire resistance</b>		
Fire resistance	60 minutes*	
Integrity (E)	E60*	
Thermal isolation (I)	I60*	
Classification	EI60*	
Barrie height	max. 900 mm*	
Total wall height	max. 4000 mm*	(including Sonorex barriere)
Resistance against smoke penetration	76 minutes*	Based on NEN 6075:2011
Smoke permeability	S <sub>m</sub>	Based on NEN 6075:2011
<b>Fire class</b>	A2-s1,d0	Based on NEN-EN13501-1:2007+A1:2009

### Usage

Refer to the Sonorex® assembly advice for information on how to fit the Sonorex® 33/60 Ultimate barrier. Contact us if you have specific questions about the usage of the Sonorex® 33/60 Ultimate barrier.

(\*) Sonorex® products have been tested in accordance with the standards stated in this datasheet. We recommend that you contact us if you have questions about usability, dimensions and connections.

LABORATORIUM VOOR AKOESTIEK



LUCHTGELUIDISOLATIE VAN EEN SCHEIDINGSCONSTRUCTIE  
CONFORM ISO 10140-2:2010

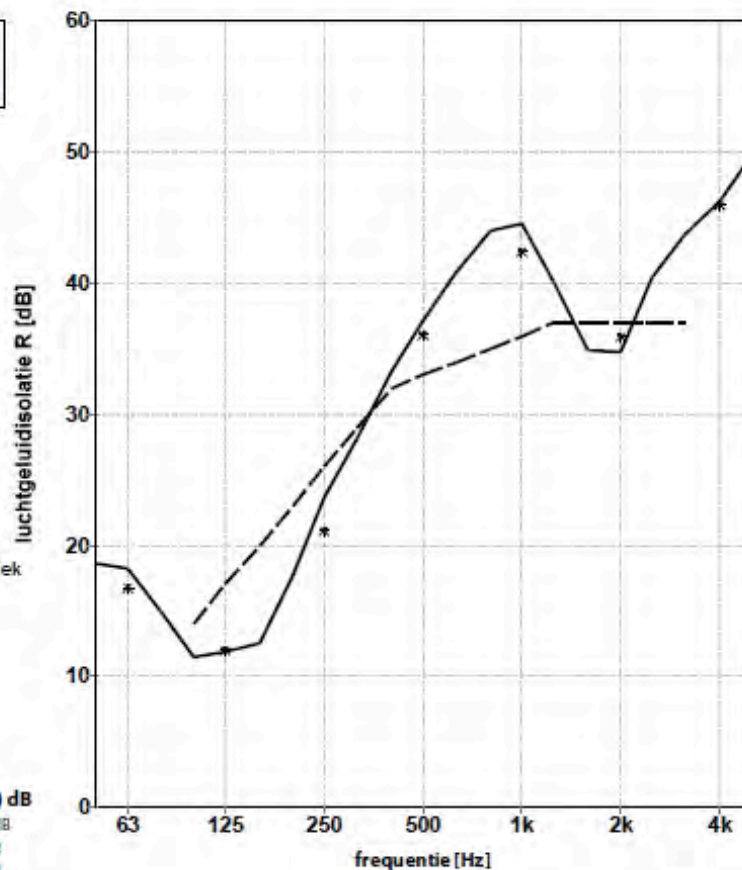


opdrachtgever: Insulation Solutions B.V.

onderzochte constructie: **Sonorex \* 33 dB Ultimate**  
opbouw; versterkt aluminium folie  
30 mm steenwol (harde persing)  
5 mm Ultimate (zachte persing)  
30 mm steenwol (harde persing)  
versterkt aluminium folie

— 1/3 oct.  
\* 1/1 oct.  
- - - ref. curve (ISO 717)

volume meetruimte: 214 m<sup>3</sup>  
volume meetruimte: 115 m<sup>3</sup>  
oppervlakte proefwand: 1,88 m<sup>2</sup>  
massa: ca. 9,15 kg/m<sup>2</sup>  
gemeten in:  
Peutz Laboratorium voor Akoestiek  
signaal: breedband ruis  
bandbreedte: 1/3 octaaf



ISO 717-1:2013

**R<sub>w</sub>(C<sub>1</sub>;C<sub>2</sub>) = 33(-2;-8) dB**  
C<sub>120-1000</sub>C<sub>2120-2000</sub> = (-1;-8) dB  
C<sub>100-1250</sub>C<sub>2250-5000</sub> = (-3;-8) dB  
C<sub>100-1000</sub>C<sub>210-1000</sub> = (-2;-8) dB

	63	125	250	500	1k	2k	4k
1/3 oct.	18,6	11,5	17,7	33,3	44,0	34,9	43,8
	18,2	11,9	23,6	37,2	44,5	34,7	46,3
	14,8	12,6	28,2	40,8	40,2	40,5	49,7
1/1 oct.	<b>16,8</b>	<b>12,0</b>	<b>21,2</b>	<b>36,1</b>	<b>42,4</b>	<b>36,0</b>	<b>46,0</b>

inulat versie 3.17 mod 1, bestandsnaam a2796\_58234\_235 #8236

publicatie is slechts toegestaan in de vorm van dit gehele blad

Mock, 25-02-2015