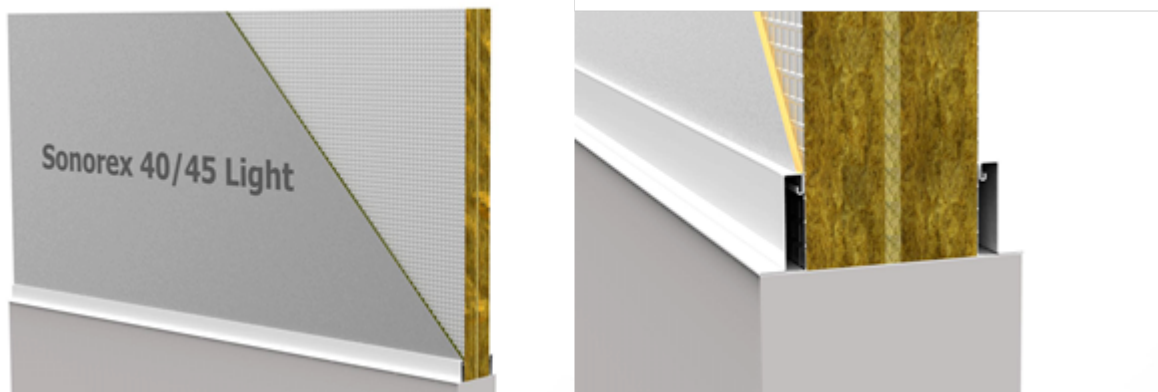


# Sonorex® 40/45 Light

## Easy Mass Fire and Noise Barriers

### General

The Sonorex® 40/45 barrier was specially developed for use above light partition walls and lowered ceilings in order to improve lengthwise insulation and fire resistance. This development was driven by a growing demand for flexibility of furnishing in combination with stringent requirements in the utility and healthcare sectors.



The unique composition of the Sonorex® 40/45 barrier renders the use of one or more plaster strips in the Bandraster grid unnecessary, provided that the adjoining ceiling is specified as fire class C or better and is locally resistant to higher temperatures. The Sonorex® 40/45 barrier is usable in combination with the wall up to a total height of no less than 4000 mm!

### Technical data

<b>Size</b>		
Barrier height	max. 2000 mm*	
Length	1200 mm	
Thickness	66mm	
Thickness mass foil	2.5 mm	(used on one side)
<b>Sound Insulation</b>		
	40 dB*	Based on ISO717-1:2013
<b>Fire resistance</b>		
	47 minutes*	(1) Mass foil mounted on fire side
Integrity (E)	E30*	
Thermal isolation (I)	I45*	
Classification	EI45*	
Barrier height	max. 900 mm*	
Total wall height	max. 4000 mm*	(including Sonorex barriere)
Resistance against smoke penetrat	76 minutes*	Based on NEN 6075:2011
Smoke permeability	S <sub>m</sub>	Based on NEN 6075:2011

### Usage

Refer to the Sonorex® assembly advice for information on how to fit the Sonorex® 40/45 barrier. Contact us if you have specific questions about the usage of the Sonorex® 40/45 barrier.

(\*) Sonorex® products have been tested in accordance with the standards stated in this datasheet. We recommend that you contact us if you have questions about usability, dimensions and connections.

LABORATORIUM VOOR AKOESTIEK



**LUCHTGELUIDISOLATIE VAN EEN SCHEIDINGSCONSTRUCTIE CONFORM ISO 10140-2:2010**

opdrachtgever: Insulation Solutions

onderzochte constructie: **Sonorex® 40 dB light**

basis schot Sonorex® 33 dB Ultimate: versterkt aluminium folie  
30 mm steenwol (harde persing)  
5 mm Ultimate (zachte persing)  
30 mm steenwol (harde persing)  
versterkt aluminium folie

toevoeging (1-zijde): Sonorex® Easy Mass massafolie  
dikte 2,5 mm  
massa ca. 5,2 kg/m<sup>2</sup>

massa (totaal): ca. 14,7 kg/m<sup>2</sup>

TESTEN RvA L 334

volume meetruimte: 214 m<sup>3</sup>  
volume meetruimte: 115 m<sup>3</sup>  
oppervlakte proefwand: 1,88 m<sup>2</sup>  
massa proefwand: 14,7 kg/m<sup>2</sup>  
gemeten in: Peutz Laboratorium voor Akoestiek  
signaal: breedband ruis  
bandbreedte: 1/3 octaaf

ISO 717-1:2013

$R_w(C_1;C_2) = 40(-4;-10)$  dB  
 $C_{125-1000}C_{125-1000} = (-3;-10)$  dB  
 $C_{100-1120}C_{100-1120} = (-4;-11)$  dB  
 $C_{100-1000}C_{100-1000} = (-3;-11)$  dB

	63	125	250	500	1k	2k	4k
1/3 oct.	18,8	13,2	26,4	38,8	44,4	50,6	61,1
1/1 oct.	18,7	15,0	31,5	40,5	43,4	54,9	60,5
ref. curve (ISO 717)	19,4	21,4	35,4	41,3	44,1	57,7	59,2
1/1 oct.	19,0	15,4	29,6	40,1	43,9	53,4	60,2

publicatie is slechts toegestaan in de vorm van dit gehele blad

Mook, 15-10-2014

Insulat versie 3.17 mode 1. bestands naam a2796 S&K131-132 #6-133