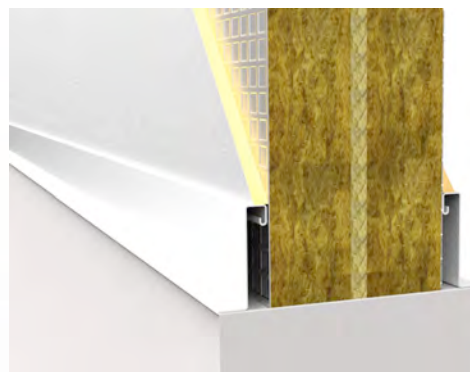


Sonorex® 47/60

Easy Mass Fire and Noise Barriers

General

The Sonorex® 47/60 barrier was specially developed for use above light partition walls and lowered ceilings in order to improve lengthwise insulation and fire resistance. This development was driven by a growing demand for flexibility of furnishing in combination with stringent requirements in the utility and healthcare sectors.



The unique composition of the Sonorex® 47/60 barrier renders the use of one or more plaster strips in the Bandraster grid unnecessary, provided that the adjoining ceiling is specified as fire class C or better and is locally resistant to higher temperatures. The Sonorex® 47/60 barrier is usable in combination with the wall up to a total height of no less than 4000 mm!

Technical data

Size		
Barrier height	max. 2000 mm*	
Length	1200 mm	
Thickness	66mm	
Thickness mass foil	5 mm	(Used on both sides)
Sound Insulation		
	47 dB*	Based on ISO717-1:2013
Fire resistance		
	68 minutes*	
Integrity (E)	E60*	
Thermal isolation (I)	I60*	
Classification	EI60*	
Barrie height	max. 900 mm*	
Total wall height	max. 4000 mm*	(including Sonorex barriere)
Resistance against smoke penetration	76 minutes*	Based on NEN 6075:2011
Smoke permeability	S _m	Based on NEN 6075:2011

Usage

Refer to the Sonorex® assembly advice for information on how to fit the Sonorex® 47/60 barrier. Contact us if you have specific questions about the usage of the Sonorex® 47/60 barrier.

(*) Sonorex® products have been tested in accordance with the standards stated in this datasheet. We recommend that you contact us if you have questions about usability, dimensions and connections.

LABORATORIUM VOOR AKOESTIEK



LUCHTGELUIDISOLATIE VAN EEN SCHEIDINGSCONSTRUCTIE
CONFORM ISO 10140-2:2010



opdrachtgever: Insulation Solutions B.V.

onderzochte constructie: **Sonorex® 47 dB**

basis schot Sonorex® 33 dB Ultimate:

- versterkt aluminium folie
- 30 mm steenwol (harde persing)
- 5 mm Ultimate (zachte persing)
- 30 mm steenwol (harde persing)

toevoeging (2-zijden):

- versterkt aluminium folie
- Sonorex® EasyMass
- dikte 4,5 mm
- massa ca. 9,2 kg/m²
- 2 Sonorex Screws per m²

— 1/3 oct.
* 1/1 oct.
- - - ref. curve (ISO 717)

volume meetruimte: 214 m³

volume meetruimte: 115 m³

oppervlakte proefwand: 1,88 m²

massa proefwand: 27,9 kg/m²

gemeten in:
Peutz Laboratorium voor Akoestiek

signaal: breedband ruis

bandbreedte: 1/3 octaaf

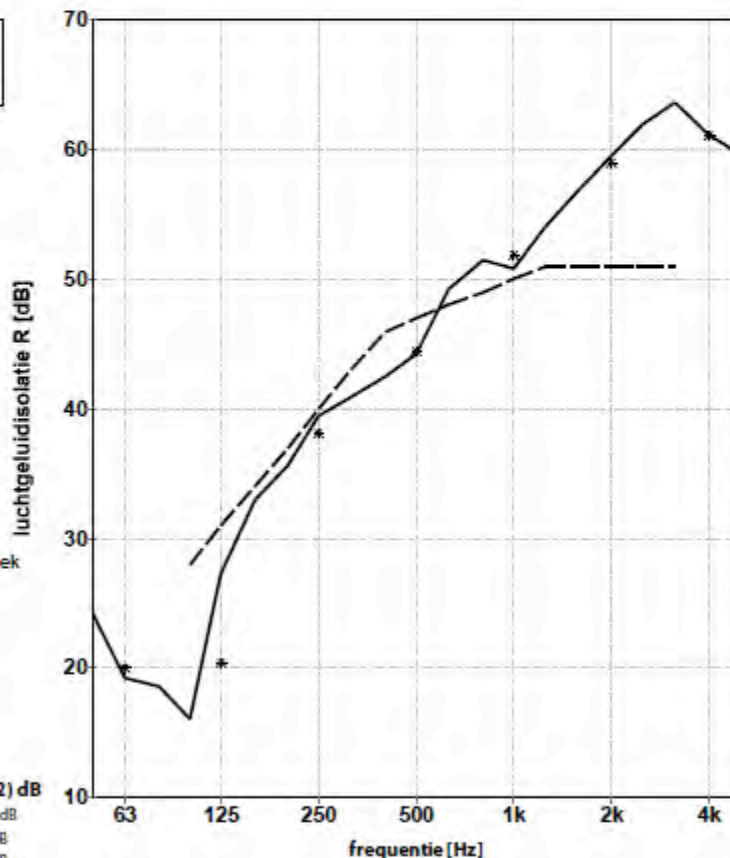
ISO 717-1:2013

R_w(C₁;C₂) = 47(-4;-12) dB

C₁₀₀₋₁₀₀₀;C₄₋₁₂₅₋₁₀₀₀ = (-3;-12) dB

C₁₀₀₋₁₁₂₀;C₂₅₀₋₁₁₂₀ = (-5;-14) dB

C₁₀₀₋₅₀₀;C₂₅₀₋₅₀₀ = (-4;-14) dB



	63	125	250	500	1k	2k	4k
1/3 oct.	24,3	16,1	35,7	42,5	51,5	56,9	63,6
	19,2	27,3	39,5	44,2	50,9	59,6	61,1
	18,6	33,0	40,9	49,2	54,0	62,0	59,7
1/1 oct.	20,1	20,5	38,1	44,5	51,9	59,0	61,2

publicatie is slechts toegestaan in de vorm van dit gehele blad

Mook, 15-10-2014

rapport nr. A 2796-3-001

figuur nr. 4